

# ***AeroLift<sup>2</sup>***



***Right look  
Proved function  
Best value***

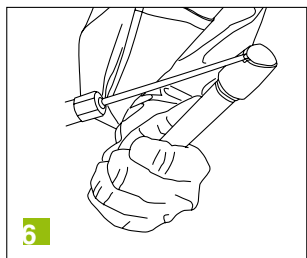
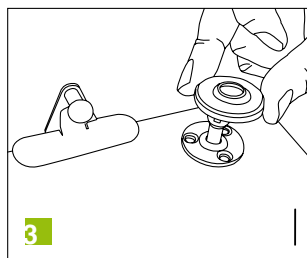
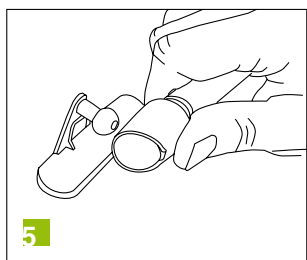
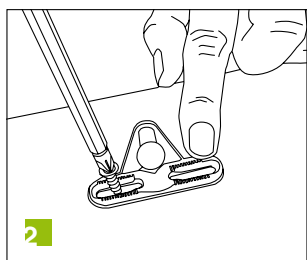
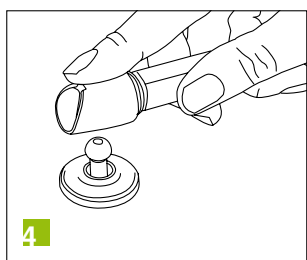
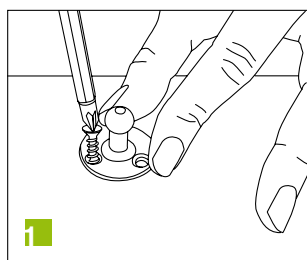


**FORMENTI &  
GIOVENZANA**



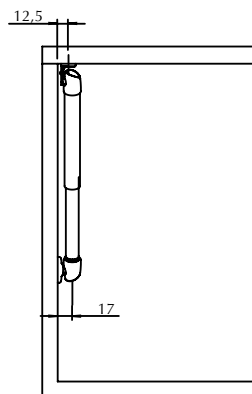
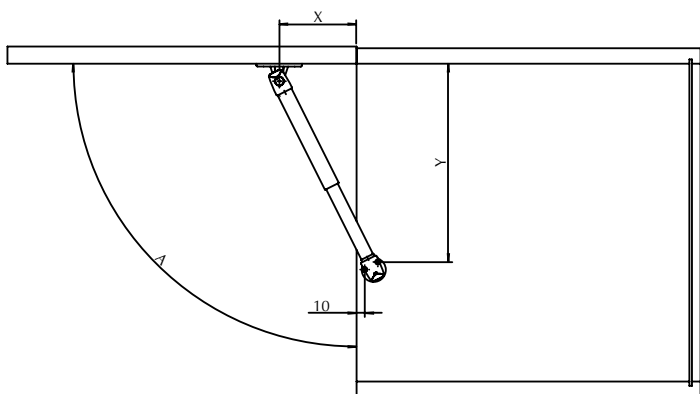
### Many advantages:

- Excellent design and non-invasive look
- Easy to mount and simple to dismantle
- Door angle opening adjustable by simple rotation of the body of the gas lift
- Works perfectly in combination with OneTouch device
- Available in different forces to accommodate different door weights and door sizes



### Easy to assemble:

- Fix the cabinet bracket and the door bracket with countersunk screws – clip the covers
- Press the bottom holder onto the cabinet bracket
- Press the top holder onto the door bracket
- For removal, lift the cover on the holder and pull the steel pins – the holder are now free
- Adjust the position of the door by turning the body of the damper



| A    | X   | Y   |
|------|-----|-----|
| <90° | 100 | 245 |
| 90°  | 90  | 240 |
| >90° | 80  | 235 |